



**TUSTIN
PRESBYTERIAN
CHURCH**

225 West Main Street, Tustin, CA 92780-4319

714/544-7070 • FAX 714/544-1940

www.tustinpresbyterian.org |

info@tustinpresbyterian.org



September 29, 2024
(Twenty-Sixth Sunday)
In-person Worship in the
Sanctuary
10:00 a.m.

Video Recording
Live Feed: 10:00 a.m.

GENERAL INFORMATION

OFFICE HOURS

Due to staff vacation, the office will open late at 10:00 a.m. on Thursday, Oct. 3. The office will be closed on Friday, Oct. 4.



JUST A WORD ABOUT STEWARDSHIP..... THANKS!

Sincere thanks for your continued financial support during the present year. As always, the members of Tustin Presbyterian Church take stewardship seriously, and this is reflected in fulfilling the pledge we all made in the fall of last year. Your faithfulness to your financial commitment allows our church to be a very special place for its members and a beacon of light to the Greater Tustin Community. Thank you for your dedication and fulfilling your financial pledge to TPC.



NEW MEMBER CLASS



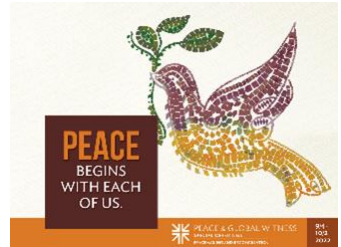
**Become
Part of
Our
Church
Family**

Are you interested in becoming a member of TPC? If you are, you are invited to a New Member Class, Sunday October 20, at 11:30 a.m. in the Church Office. At this session we will share with you who Presbyterians are and how we live that out at TPC, and

if you are ready, we will receive you as a member. For more information, contact the church office at 714-544-7070 or talk to Pastor Steve.

PEACE AND GLOBAL WITNESS OFFERING

In too many places around the world, peace is merely a hope. Conflicts between nations, peoples, and ideas put peace at risk worldwide. Your gift to the Peace and Global Witness Offering works to address these deep-seated problems by supporting efforts to inspire, equip, and connect Presbyterians engaging in ministries of reconciliation and peace around the world. Twenty-five percent of your gift is retained by TPC, bringing the power of reconciliation and the peace of Christ to our community. Traditionally one-half of this amount has been designated to send members of our youth group to Presbyterian Youth Triennium. The other half has been used in various ways to promote peace in our community. We'll be receiving the Peace and Global Witness Offering on October 6. You may use the envelopes in the pew pockets, or you may simply indicate "peace offering" on your check. Help bring the peace of Christ to communities of conflict. Please give generously!



CONGREGATIONAL MEETING

The Session has called a meeting of the congregation for Sunday, October 20, in the Sanctuary, immediately following worship, for the purpose of electing Elders and Deacons to begin service in January 2025. Members must be present in person in order to vote.



WOMEN'S BIBLE STUDY THURSDAYS, AT 6:00 P.M., FIRESIDE LOUNG CONTINUES!



Erika Patterson will be leading the weekly class. Step into the incredible story of Ruth! This dynamic Bible study invites you to explore Ruth's courageous journey and uncover the powerful messages of faith and redemption that continue to inspire us today. Engage in lively discussions, connect with others, and experience the thrill of discovering how Ruth's legacy can transform our own lives. Don't miss this chance to dive into an exciting spiritual adventure. Everyone is welcome to join us and be part of this uplifting exploration! The class will run for 6 weeks on Thursday evenings. If you would like to get more information, call the church office at 714-544-7070.

MINUTE FOR MISSION: YOUTH AND YOUNG ADULT SUNDAY

At the end of August, many young people, the new group of Young Adult Volunteers (YAVs), gathered from different worlds — some speaking English, others Spanish.



Conversation came slowly and hesitantly as we tried to connect, but the distance of language hung heavy between us. Then, one evening a few days into orientation, everything changed. With just three words, everyone gathered around, and suddenly we were all speaking the same language.

"Let's play Uno." The rules are simple, understood in glances and nods, smiles and laughter. The language we had struggled with earlier dissolved, replaced by something deeper. Joy became the bridge we hadn't known we needed. As someone played a +4 card, suddenly we didn't need words anymore.

Laughter became a universal language. In that moment, all walls came down. The Spirit of God moved through us, carried by the sound of joy. The joy of the Lord had spoken louder than any language has the power to do. We had found a common tongue, one that didn't require translation. It was as if the game itself had become a vessel for deeper connection, one that transcends any one language. A game so simple turned into long-lasting memories. We found that sometimes the simplest of things can bridge even the widest gaps, and that joy can be the most profound language of all.

SEPTEMBER 29, 2024– OCTOBER 6, 2024

<p align="center">Sunday 9/29</p>	<p>9:00 a.m. 10:00 a.m. 10:00 a.m. 10:00 a.m. 11:30 a.m. 1:30 p.m. 2:30 p.m. 3:00 p.m.</p>	<p>Choir Warm-Up, S Sunday School Nursery – Elementary WORSHIP Spanish Sunday School, FL TPC Spanish Service, FH TTPC Worship, S TPC Fellowship, FH TTPC Adult Education, C103</p>
<p align="center">Monday 9/30</p>	<p>6:00 p.m.</p>	<p>AA Meeting, C205 Office Closed</p>
<p align="center">Tuesday 10/1</p>	<p>7:00 p.m.</p>	<p>AA Meeting, C205</p>
<p align="center">Wednesday 10/2</p>	<p>7:00 p.m.</p>	<p>TPC Spanish Bible Study, FL, FH</p>
<p align="center">Thursday 10/3</p>	<p>6:00 p.m. 7:00 p.m. 7:00 p.m. 7:30 p.m.</p>	<p>Women’s Bible Study, FL Choir Rehearsal, CR AA Meeting, C205 Youth Group, YL Office Opens 10:00 a.m.</p>
<p align="center">Friday 10/4</p>	<p>6:00 a.m. 9:00 a.m. 3:00 p.m.</p>	<p>AA Meeting, C205 Men’s Group, The Lost Bean Food Bank Set-Up, FH Office Closed</p>
<p align="center">Saturday 10/5</p>	<p>7:30 a.m. 7:30 a.m. 7:30 a.m. 10:00 a.m. 5:00 p.m.</p>	<p>AA Meeting, C205 Food Bank Distribution, FH Food Bank Children’s Crafts, FL TTPC Choir Practice, C103 ESL Classes, FL</p>
<p align="center">Sunday 10/6</p>	<p>9:00 a.m. 10:00 a.m. 10:00 a.m. 10:00 a.m. 11:30 a.m. 1:30 p.m. 2:30 p.m. 3:00 p.m.</p>	<p>Choir Warm-Up, S Sunday School Nursery – Elementary WORSHIP & COMMUNION Spanish Sunday School, FL TPC Spanish Service, FH TTPC Worship, S TPC Fellowship, FH TTPC Adult Education, C103</p>

WAYS TO GIVE

PEW ENVELOPE

check or cash

ONLINE

www.tustinpresbyterian.org